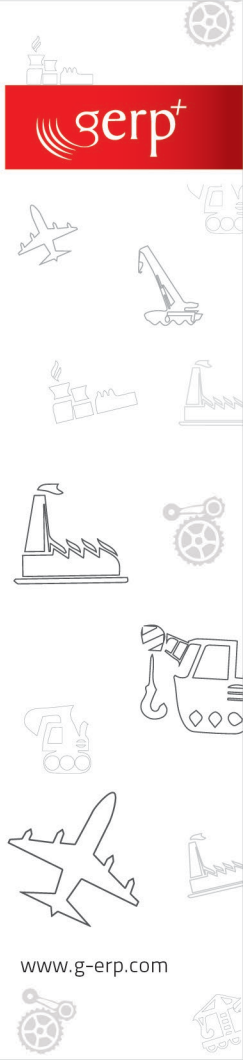


The
ERP Software Suite
for Manufacturing, Construction & Aviation Industries



www.g-erp.com

GERP+ Modules for Aviation, Manufacturing & Construction Industries



AVIATION

- ◆ Operations Management
- ◆ Cost & Contracts Management
- ◆ Zero Based Budgeting
- ◆ Route Profitability Analysis



MANUFACTURING

- ◆ Production Planning
- ◆ Online Production
- ◆ Quality Control & Lab
- ◆ Packing
- ◆ Traceability



CONSTRUCTION

- ◆ Engineering
- ◆ Estimation & Budgeting
- ◆ Sub Contract Management
- ◆ Tender Bid Management
- ◆ Customer Billing

PURCHASE

- ◆ Vendors
- ◆ Quotes
- ◆ Purchase Orders
- ◆ Returns



SALES

- ◆ Quotation
- ◆ Sales Order
- ◆ Dispatch
- ◆ Invoicing



INVENTORY

- ◆ Stores
- ◆ Inward Goods
- ◆ Stock Issues
- ◆ Transfers
- ◆ Returns
- ◆ Adjustments
- ◆ Inventory Tracking



ACCOUNTS

- ◆ Accounts
- ◆ P & L
- ◆ Balance Sheet
- ◆ MIS



ASSET MANAGEMENT

- ◆ Purchase
- ◆ Allocation & Tracking
- ◆ Maintenance & Compliance
- ◆ Depreciation
- ◆ Reports



HRMS

- ◆ Employee Information
- ◆ Leave & Attendance
- ◆ Payroll
- ◆ Recruitment Management
- ◆ Employee Self Service



Salient Features of GERP⁺

- Provides complete visibility to all key aspect of the business. Authorized people from management can get a snap shot view about Inventory Levels, Production status, Capacity Utilization, Wastage & other key business data & thereby helps to manage business from any part of the world
- Control cost of operations and increase profitability of an airline through effective contract management, budgeting and route profitability analysis
- Ensure profitability on construction projects through effective project management, monitoring and control
- Provides detailed information about cost overruns, abnormal wastages, under-utilized resources (machine/man) for taking quick corrective actions. Helps to control cost and reduce wastage
- Makes your company System Driven rather than People Driven thereby ensuring business continuity in case of eventualities
- Implements proven & time tested industry best practices thereby automatically aligning your business to international standards
- Monitors KPI's & sends alerts to managers when the KPI goes above or below threshold levels. This helps to quickly respond to deviations/issues
- Restricts un-authorized access to the system & also facilitates secure exchange of key business data. Provides required access only to the required people
- Audit Trail helps to keep track of 'who did what at what point of time'
- Helps to monitor maintenance dues & perform preventive maintenance of plant and machinery to ensure uninterrupted operation of business. Helps to monitor expiry of license, insurance, calibration etc.
- Flexible cloud and in-premise hosting options

The ERP Software Suite

for Manufacturing, Construction & Aviation Industries



Manage from anywhere

Get complete visibility of all operations of your business from anywhere in the world



Control your cost

Gain absolute control of cost through better utilisation of Men, Machine, Material & Money



Reduce Wastage

Reduce wastage through better planning, close monitoring of operational parameters and timely action



Reporting

Get all the reports of Revenue, Cost, Profitability and of other operational KPI's in your mail and mobile

Manufacturing



Aviation



Construction



Sales



Purchase



Inventory



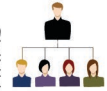
Assets



Accounting



HRMS



For more details, visit : www.g-erp.com

GTI (GrandTrust InfoTech (P) Ltd., Geo Infopark, KINFRA, Infopark P O, Kochi, Kerala, India | MALAYSIA : EGITC SDN BHD, Subang Jaya, Selangor Darul Ehsan
☎ 91 484 2415 333 📱 +91 999 580 1262, +91 989 526 0414 ☎ +603 8023 4116 ✉ info@g-erp.com